

Wool on Wool Felted Centerpiece

Designed by Alicia Carr



Needle Felting Tools



Materials

- Needle Felting Tool (Art. No 8900)
- Needle Felting Mat Small or Large (Art No 8910 8911)
- Gold Eye Embroidery Needles (Art. No 235)
- WoolFelt Sheets in three colors of preference (this project used Moss Green, Bright Red and Black)
- Embroidery Floss
- Bordeaux Ultimate Scissors 130 (Art. No 4940)



Instructions

Step 1: Cut the necessary pieces.

*Clover used Sizzix Die-Cut Templates but cuts can be achieved when cut manually.

**5 in. circle
for center**

Qty: 1



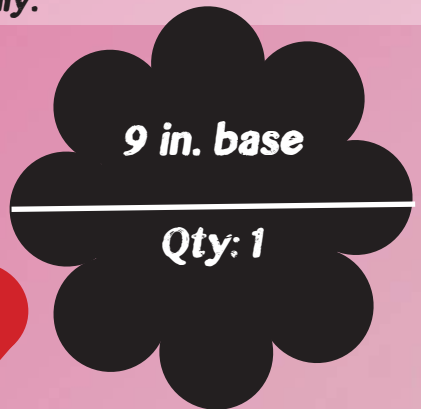
**1 in. circles
Qty: 8**



**2.5 in. heart
Qty: 1**

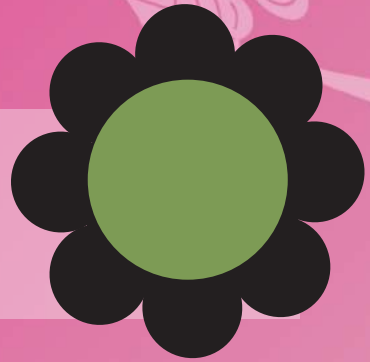
9 in. base

Qty: 1



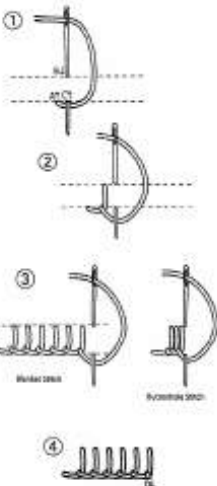
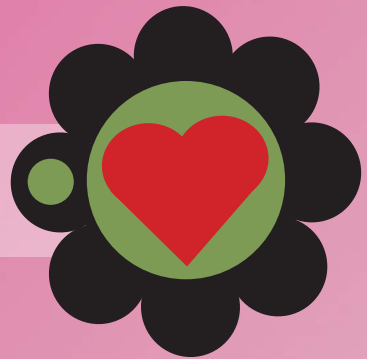
Instructions (cont.)

Step 2: Place the 9 in. base on top of Felting Mat, then place the 5 in. circle in the center of the base and start felting using the Needle Felting Tool. Felt until the 5 in. circle is felted in place.



Step 3: Repeat step 2, this time placing the bright red heart in the center of the 5 in. circle.

Step 4: Now, using the same method felt the 1 in. circles in the center of outer petals.



Step 5: Using Gold Eye Embroidery Needles & embroidery floss, stitch all edges, including outer edges of the base using the Blanket Stitch.

This will help keep the felted pieces in place and give the project a finished look.

Follow this pattern...

9 in. base
Qty: 1

1 in. circles
Qty: 8

Embroidered
Stitched Edges

5 in. circle
Qty: 1

2.5 in. heart
Qty: 1

For this finished look...



P.O. Box 3850
Ontario CA 91761
www.clover-usa.com
Toll: (800)233-1703
Fax: (909)218-2161

CT0165



cloverusa



clover needlecraft



@cloverusa



cloverusa



cloverusa



cloverusa